

Contents:

Mug Rug Instructions	2
Alternate Back Instructions	8
Resources	10

General Supply List:

- Sheer cut away mesh stabilizer
- Ruler
- Rotary cutter
- 80/12 or 90/14 sharp embroidery needles
- Embroidery thread and bobbin thread
- [Embroidery snips](#)
- Point Turner and Seam Creaser Tool
- Hand sewing needle and thread (optional)

5" x 7" Mug Rug:

- 6" x 8" piece of [Soft Loft Fusible Stabilizer](#) or other thin batting
- 1 - 4½" x 6" piece of fabric for the main patch
- 3 - 1½" x 6" pieces of fabric for the 3 small patches
- Applique fabric for the milk and glass
- 1 - 6" x 8" **OR** 2 - 5" x 6" pieces of fabric for the back

8" x 12" Mug Rug:

- 9" x 13" piece of [Soft Loft Fusible Stabilizer](#) or other thin batting
- 1 - 7½" x 9" piece of fabric for the main patch
- 3 - 2½" x 9" pieces of fabric for the 3 small patches
- Applique fabric for the milk and glass
- 1 - 9" x 13" **OR** 2 - 7½" x 9" pieces of fabric for the back



Cookies for Santa

Hoop Sizes: 7" and 12"



Dimensions: 4¾" x 6¾" and 7½" x 11½"

Copyright

Sharing is Stealing! All digitized designs and instructions are copyrighted by Shelly Smola Designs and are **only** for use by the person who originally purchased the designs. Digitized designs are not to be shared, swapped, duplicated or sold in any way. Designs in their stitched out form can be used on personal items and gifts. The digitized design itself remains the property of Shelly Smola Designs. Please respect Shelly's hard work, and help her continue to offer quality designs by following copyright laws.

Mug Rug Instructions

Use a size 80/12 sharp embroidery and sheer cut away mesh stabilizer.

Please pre-shrink and iron all fabric before beginning. If your machine doesn't do it for you, cut all jump threads after each color. :-)

The 7" and 12" designs are made exactly the same way. If you would like to *watch* how they're pieced, click [here](#) and scroll down a bit to see the tutorial! Although the video shows the [Snow Day](#) mug rug, the piecing is the same.

The following instructions show how to make the mug rugs with a single piece of fabric on the back and a teeny bit of hand sewing to close the gap (just like in the tutorial). If you really don't want to do any pesky hand sewing, alternate instructions have been included to finish the mug rug in the hoop with overlapping fabric for the back. They begin on page 8.



For the 5" x 7" mug rug, you will need:

- 1 - 6" x 8" piece of **thin** batting (See Note)
- 1 - 4½" x 6" piece of fabric for the main patch
- 3 - 1½" x 6" pieces of fabric for the 3 small patches
- Applique fabric for the milk and glass
- 1 - 6" x 8" piece of fabric for the back of the mug rug

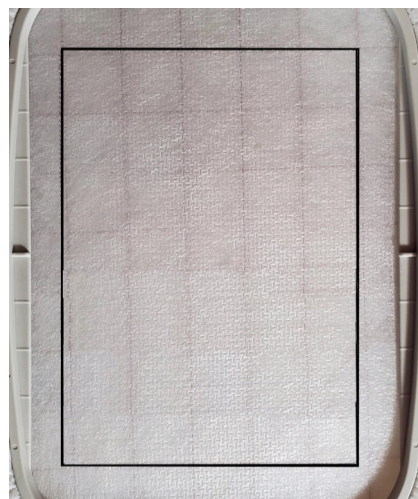
For 8" x 12" mug rug, you will need:

- 1 - 9" x 13" piece of **thin** batting (See Note)
- 1 - 7½" x 9" piece of fabric for the main patch
- 3 - 2½" x 9" pieces of fabric for the 3 small patches
- Applique fabric for the milk and glass
- 1 - 9" x 13" piece of fabric for the back of the mug rug

NOTE: These mug rugs are designed to be made with **thin** batting. You will have batting in your seam allowance, so keep that in mind when choosing your batting thickness. I've used both Soft Loft Fusible Stabilizer and Warm and Natural Cotton batting for my mug rugs. Warm and Natural is just a bit thicker, and it gives the mug rugs a little more weight. I like both options.



1. Prepare the fabric patches and batting.



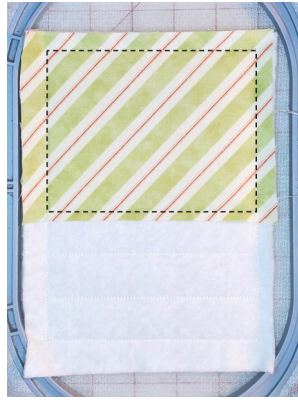
2. Hoop a piece of cut-away stabilizer. Embroider the placement line for the batting on the stabilizer (color 1).



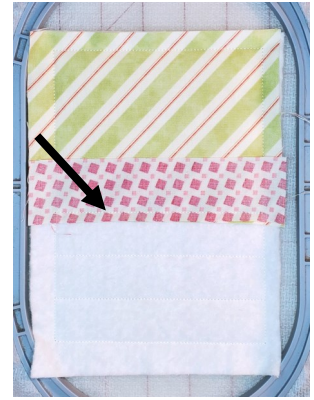
3. Place the batting over the stitched outline. It should overlap the outline on all edges by at least ¼".
4. Embroider the tackdown for the batting and the placement lines for all of the patches (color 2).



5. Place the large patch over the first section as shown. It should overlap all edges by at least $\frac{1}{4}$ ".



6. Embroider the tackdown line for the main patch (color 3).



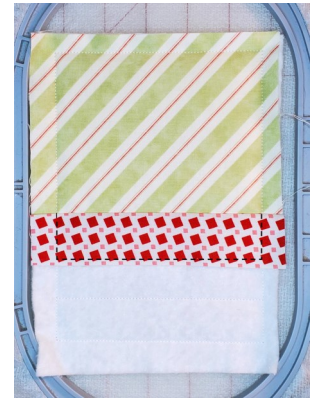
7. Place the next patch **right side down** over the last patch so that it overlaps the line indicated by the arrow by $\frac{1}{4}$ ". (The fabric covers the line.)



8. Embroider the seam line for this patch (color 4).



9. Fold the fabric over the seam line, and finger press the seam.



10. Gently hold the fabric in place, and embroider the tackdown for this patch (color 5).



11. Place the next patch **right side down** over the last patch so that it overlaps the line indicated by the arrow by $\frac{1}{4}$ ". (The fabric covers the line.)



12. Embroider the seam line for this patch (color 6).



13. Fold the fabric over the seam line, and finger press the seam.



14. Gently hold the fabric in place, and embroider the tackdown for this patch (color 7).



15. Place the next patch **right side down** over the last patch so that it overlaps the line indicated by the arrow by a $\frac{1}{4}$ ". (The fabric covers the line.)



16. Embroider the seam line for this patch (color 8).



17. Fold the fabric over the seam line, and finger press the seam.



18. Gently hold the fabric in place, and embroider the tackdown for this patch (color 9).



19. Embroider the stippling inside the large patch (color 10). If you'd like to use the same thread for all of the stippling, don't change thread yet!



20. Embroider the stippling inside the first stripe (color 11). If you are using the same thread for all of the stippling, don't change thread yet!



21. Embroider the stippling inside the middle stripe (color 12). If you are using the same thread for all of the stippling, don't change thread yet!



22. Embroider the stippling inside the last stripe (color 13).



23. Embroider “Milk &” and “for Santa” (color 14).



24. Embroider “Cookies” (color 15).



25. Embroider the placement line for the glass (color 16).



26. Place a piece of fabric over the line. Gently hold it in place, and embroider the cutting line (color 17).



27. Trim the fabric around the outline. Trim as close as you can without cutting the stitches.



28. Embroider the placement line for the milk (color 18).



29. Place a piece of fabric over the line. Gently hold it in place, and embroider the cutting line (color 19).



30. Trim the fabric around the outline. Trim as close as you can without cutting the stitches.



31. Embroider the finish for the glass (color 20).

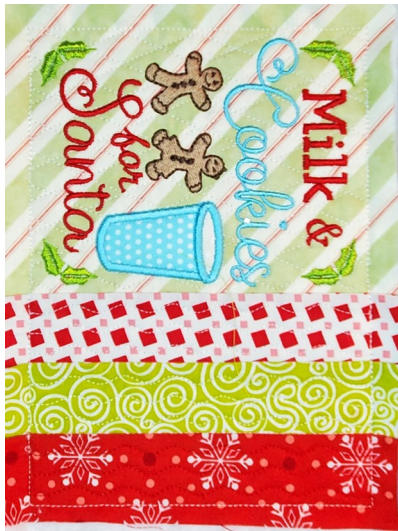
TIP: If the base fabric shows through your applique fabric, fuse a little scrap of Soft Loft Fusible Stabilizer to the back of the applique fabric. This will give the applique section a tiny bit of loft, and prevent the base fabric from showing through.



32. Embroider the gingerbread cookies (color 21).



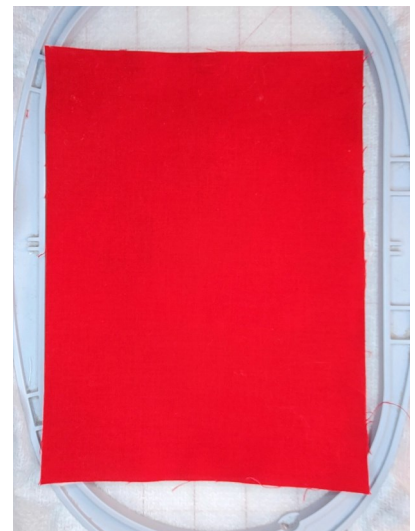
33. Embroider the trim on the cookies (color 22).



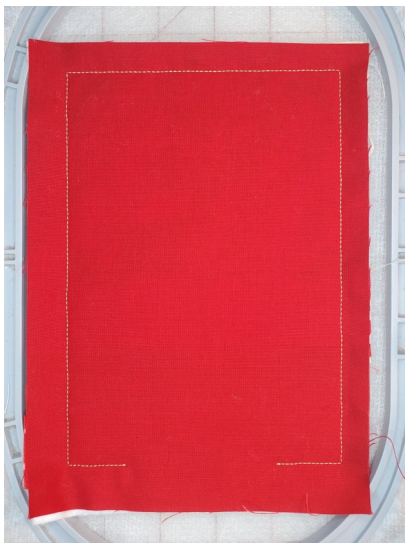
34. Embroider the holly (color 23).



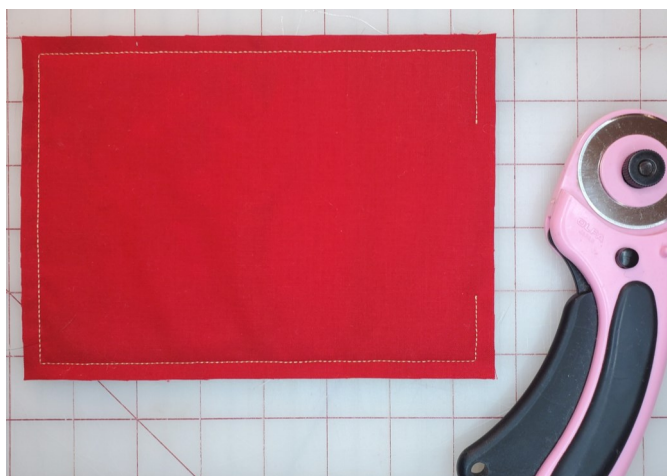
35. Embroider the berries (color 24).



36. Take the hoop out of the machine. Place the fabric for the back of the mug rug **right side down** on the front of the hoop.



37. Make sure that the fabric overlaps the edge of the mug rug on all sides by at least $\frac{1}{4}$ ". Embroider the seam line (color 25). It will have a gap at the bottom of the hoop. **DO NOT STITCH THE LAST COLOR** (color 26). This is **only** for the alternate back method! You **DO NOT** want to close the gap just yet! :-)



38. Unhoop the rug mug, and use a ruler and rotary cutter to trim the mug rug $\frac{1}{4}$ " away from the embroidered outline on all sides. This is your seam allowance.



39. Trim the corners.



40. Turn the mug rug right side out through the gap.



41. Use a Point Turner/Seam Creaser Tool to form the corners and make a nice, sharp crease along each side. Press the edges.



42. Press the fabric in the gap under $\frac{1}{4}$ ". Hand stitch the gap.

Alternate Mug Rug Instructions

The following instructions show how to make the mug rugs with overlapping fabric for the back, and they are finished in the hoop.

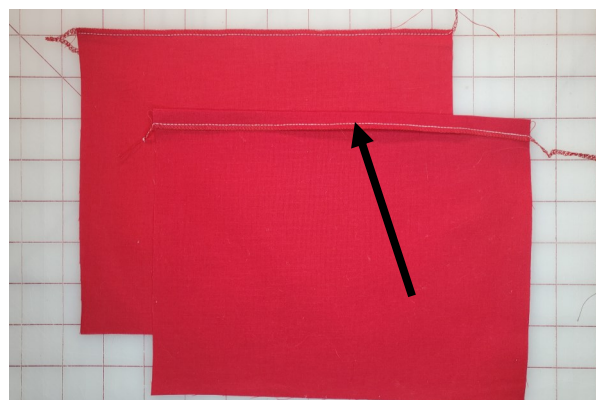
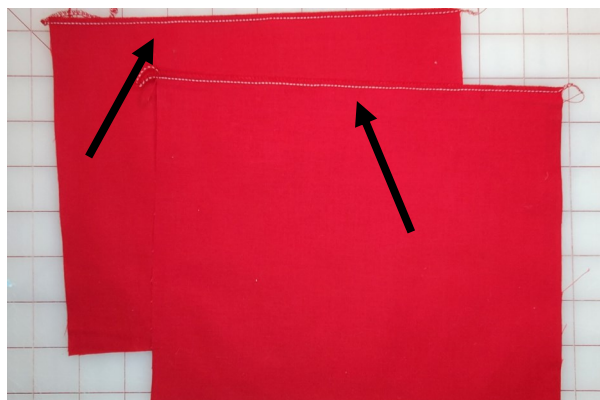


For the 5" x 7" mug rug, you will need:

- 1 - 6" x 8" piece of **thin** batting (See Note on page 2)
- 1 - 4½" x 6" piece of fabric for the main patch
- 3 - 1½" x 6" pieces of fabric for the 3 small patches
- Applique fabric for the milk and glass
- 2—5" x 6" pieces of fabric for the back

For the 8" x 12" mug rug, you will need:

- 1 - 9" x 13" piece of **thin** batting (See Note on page 2)
- 1 - 7½" x 9" piece of fabric for the main patch
- 3 - 2½" x 9" pieces of fabric for the 3 small patches
- Applique fabric for the milk and glass
- 2—7½" x 9" pieces of fabric for the back



1. Prepare the fabric for the back of the mug rug. Serge or zig zag **one** long edge of **each** of the pieces.

2. Press the long edge of **one** of the pieces under ½". No need to do it for both pieces.



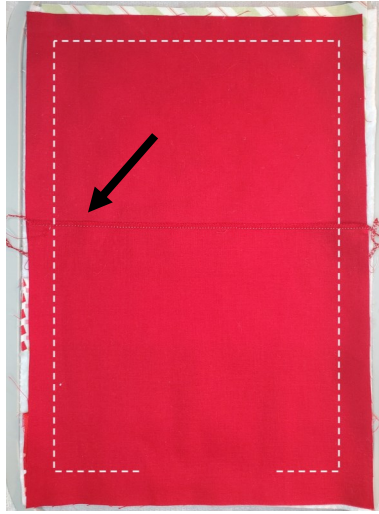
3. If you don't want the gap to go all the way across the back of the mug rug, you can stitch the two pieces of fabric together, leaving a gap in the middle. I recommend doing this if you are making the large mug rug. Make sure the two pieces sewn together will be big enough to cover the mug rug!

4. Follow steps 1-35 beginning on page 2 to make the front of the mug rug. If you want to watch how to piece the front, [click here](#) and scroll down a bit to find the tutorial. Although the video shows the Snow Day mug rug, the piecing is the same.

5. Place the fabric with the serged and folded edge right side down on the front of the hoop. It should line up with the top edge of the mug rug as shown. (If you stitched the two pieces of fabric together, just place it right side down over the mug rug.)



6. Place the second piece of fabric right side down so that it lines up with bottom of the mug rug. Make sure that the fabric for the back overlaps the outside edges of the mug rug by at least ¼”.



7. Embroider the seam line (color 25). Watch your machine carefully as it stitches down the left side. Make sure it doesn't catch the edge of the fabric (shown by the arrow) under the presser foot! I used a bit of Scotch Tape to hold the fabric down while I stitched the outline.



8. Embroider the last little line to close the gap (color 26).



9. Follow steps 38-41 on page 8 to finish the mug rug.

10. If you would like to close the overlapping gap in the back, you can use fusible web tape to join the overlapping sections. Steam-A-Seam 2 would also work. I left mine open. :-)

You might also like:



Candy Lane Cottage



Santa's Sleigh



Reindeer Treats



Merry Mini Ornaments



Resources

- www.shellysmola.com
 - ◇ Embroidery snips
 - ◇ Embroidery designs
 - ◇ Video tutorials
 - ◇ Soft Loft Fusible Stabilizer
- www.abitofstitch.com
 - ◇ Santa Charming
 - ◇ Mrs. Claus Charming
 - ◇ Reindeer Charming
- www.allstitch.com
 - ◇ Cut away stabilizer: Sheer Stitch White "Diagonal Mesh"
 - ◇ No-Show Cut Away Stabilizer
 - ◇ Embroidery thread
 - ◇ Needles
- www.joann.com or your local fabric store
 - ◇ Dritz Point Turner & Seam Creaser
 - ◇ Warm and Natural Cotton Batting
 - ◇ Fusible Web Tape
 - ◇ Steam-A-Seam 2